

REAL ESTATE & PERSONAL PROPERTY

AUCTION



Experience peaceful rural living. Call today!

Saturday November 23, 2024 at 10:00 am

PRAIRIESIDE FARM

4356 SW 50 St - Kingman, KS

Seller: David H Dick Trust

Deana Dick, Trustee

10:00 am: Household items, tools, livestock, and farm
Approx. 1:00pm: Real Estate

OPEN HOUSE



2-4p

Sunday, November 3rd

Real Estate

Selling - 80 acres with 2,278 sqft Earth Berm home, located in SW Kingman County. For real estate information packet, please contact Scott at (620) 532-4242.

Kitchen/Household

- Wood Desk
- Old Chest Drawer
- Dresser w/ 3 Chest Drawers
- Old Records
- Crank Ice Cream Freezer
- Crockpot
- Waffle Iron
- Electric Skillet
- Roaster
- Bean Pot
- Old Kitchenware
- Coolers
- Coffee Maker
- Lamps
- Blue Granite Roaster Pan
- Cabinets
- Frigidaire 20.0 cu. ft. upright freezer (nearly new)
- Frigidaire 20.4 cu. ft. refrigerator with top freezer
- Kelvinator 12.8 cu. ft. compact refrigerator
- Kenmore 2.5 cu. ft. top loading washer
- GE XL capacity dryer
- Tappan apartment size gas range
- Octagonal Coffee Table
- Entertainment Center
- 7-drawer wood dresser
- 3-drawer wood chest of drawers
- Blue hide-a-bed
- Various storage cabinets
- Record player w/ modern connectors
- 32" TV
- Stereo System
- DVD/VHS player
- Hamilton Beach Slow Cooker
- Newer Mason Jars
- Pressure Canner
- Adler Manual Typewriter w/ wide carriage
- Baskets
- Vintage Mason Jars
- Glass electric insulators
- Vintage games
- Wooden spoons
- Vintage suitcases



Back of Earth Home

Vehicles & Farm Equipment

- One-Seventy AC Tractor, gas, good rubber, WTS, 3-PT w/ GB 800 loader, bucket, bale spear, & 3-PT bale mover
- '84 GMC 1500 Sierra Pickup, 6 cyl, 4 speed
- '89 Jeep Cherokee Laredo 198,511 miles, 6 cyl, runs, transfer case out
- '75 Toyota Hilux Pickup, salvage
- 6x16 Maverick Stock Trailer, pulls good
- 8x14 Heavy bumper pull flat bed trailer, good tread, plate floor
- 6' pull bush hog mower
- 6' 3 PT Blade
- 1951 WD 6 IHC "Valve Stuck" Serial 42852
- 1947 Narrow Front M Farmall w/ loader, ran when parked, serial 149188
- 10' Krause Tandem Disk
- 12' Drag Spring Tooth
- 3-16 JD Pull Plow
- Antique 10' dump rake
- 2 wheel field sprayer
- 8' 2-wheel sickle mower
- 3-PT post hole digger, 9" BIT & storage stand
- 3-PT heavy log splitter, HYD 24" cyl
- Slip-in pickup stock racks
- 3-PT 2 prong bale mover
- Harrow sections
- 8' side-delivery rake, ground drive
- Hesston 5800 round baler, salvage
- Old Massey Grain Drill
- 12' Krause Chisel w/cyl
- 12' Graham Hoeme Chisel w/cyl

Miscellaneous

- Wood orange crate
- 4 drawer filing cabinet
- Metal shelving
- Fruit jars
- Food Dehydrator
- Garden Chemicals
- Rechargeable remote control lantern
- Old slide projector
- Antique wooden pop case
- Grab bars
- Vintage toys
- New bathroom vent and light
- Antique baby doll high chair



Barn

Shop & Tools

- 5' AL Step Ladder
- SR 150 Snapper Riding Mower, 14 HP Koeler, needs clutch plate
- Halogen Shop Lights
- 2 & 3 gallon sprayers
- 10' AL BX Tension Ladder
- 2-implement jacks
- Manual pole saw
- 110 AC air compressor
- Floor jack
- 220 AC Welder, helmet, rod and welding equipment
- Shovels, spades, rakes, pitch forks, etc
- Floor stand grinder
- Cans of hydraulic oil & solvent
- Trailer of cans with nuts, bolts, screws, electrical wiring, repairs, & parts for household and farm.

Sheep & Chicken Equipment

- 8.5' Hasting Stock Tank
- Garden Hoses
- Chicken Feeders & Waterers
- 10 hole metal nesting box
- Big portable brooder box
- Large selection of woven sheep wire
- Baby Chick Incubator
- Sheep vet supplies
- Old combine bins
- Sheep loading chute
- Old platform scales
- 2 and 4 wheel carts & 2 pull wagons
- Chicken crates
- Pet crates
- Plastic barrels
- Brush killer & surfactant
- Electric fencer & insulators

Miscellaneous cont.

- Paper shredder
- 3 new 5 gallon cans roof coating, caulking
- Metal flashing
- Spoon rack & spoons
- Christmas Decorations

AUCTIONEER'S NOTE: Rural home buyers' take note - Real Estate sells at 1:00 pm. This offering is truly a diamond in the rough. The property is an isolated, improved 80 acre tract with electric, good water, septic, and well designed solid earth berm home (with over 200 yards of concrete used in construction). Inside the home will need a complete remodel. The potential is unlimited with this offering. Take a look and come prepared to bid! Check our website, email, text, or call Scott at scott@kingmanre.kscoxmail.com or (620) 532-4242 for a complete packer of terms and information on the real estate.

To receive a complete list and photos, go to www.kingmanksre.com, or email us at scott@kingmanre.kscoxmail.com also on KansasAuctions.net



Driving Instructions:



Scan code for direct link to Google Maps!

Concessions Provided!

146 N Main St., Kingman KS 67068 | (620) 532-3581 | www.kingmanksre.com

Scott Sparks, Broker & Auctioneer (620) 532-4242 | Dave Brittain, Auctioneer (620) 553-2112



I-70 AC Tractor w/ GB loader



6x16 Maverick Stock Trailer



1947 M Farmall
w/loader



14' Krause Chisel



Arena Rotary Harrow



3-PT post hole
digger/stand



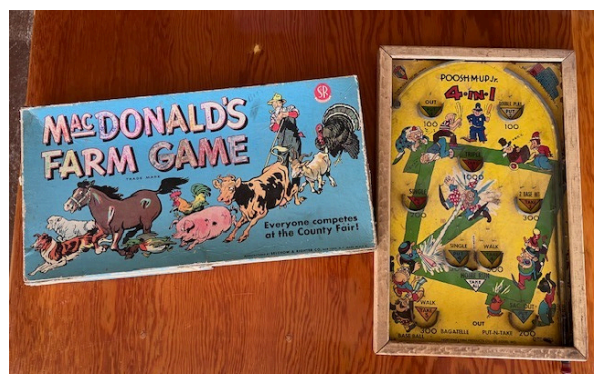
'89 Jeep Cherokee



Entertainment Center &
Furniture



Household & Kitchen
Items



Vintage games &
antiques